

National Context:

- Health and Care bill going through parliament will establish Integrated Care System (ICS) - shadow system is operating now in Bradford. Will be live by July 22.
- This will for the first time create a structure to improve partnerships across health and social care that includes all partners including the VCS.
- This new structure will have governance via an Integrated Care Board (ICB) in which all partners will be represented including the VCS.
- The aim is to reduce health inequalities across our communities e.g. bowel cancer screening take up is 34 percent in Bradford City compared to 60 percent national target and smoking rates are too high

Local Context

- Community Partnerships/ PCNs will be fundamental to the delivery of the ICB objectives through locality/ place based services.
- This will mean that the VCS will be essential to the delivery of these services to reduce health inequalities – there are ongoing discussions to move a minimum of 1% of health/ care budgets into prevention/ early intervention.
- The speakers today will be sharing about how locality/ place based initiatives are now being developed across statutory providers
- Today is your opportunity to find out about these services and learn how you can be involved with them to improve the provision for your communities in your locality.
- If you are aware of smaller grassroot organisations in your area who couldn't attend today please make sure they know about what is happening by accessing the recording of this forum

HEALTH AND SOCIAL CARE - THE NATIONAL LANDSCAPE

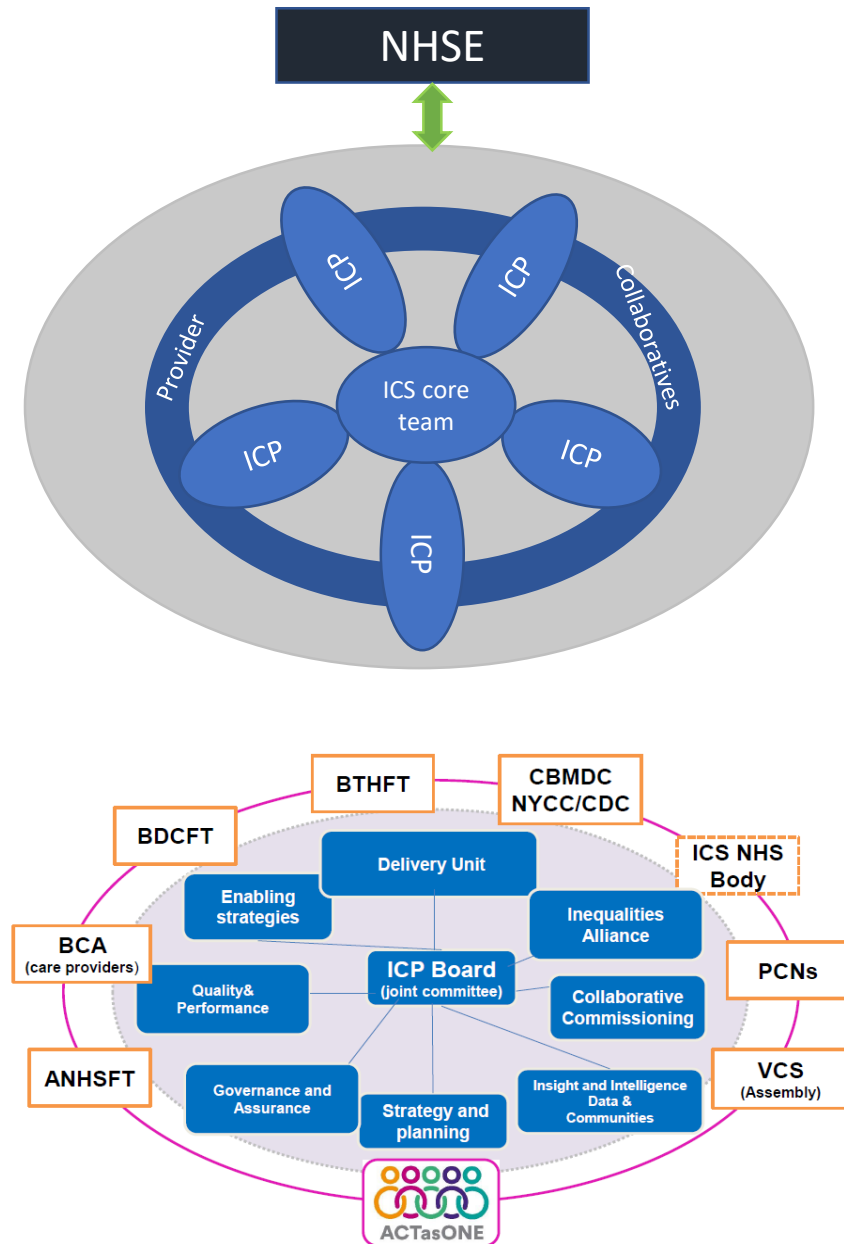
Integrated care systems (ICSs) are partnerships of health and care organisations that come together to plan and deliver joined-up services and to improve the health of people who live and work in their area.

They exist to achieve four aims:

- Improve outcomes in population health and healthcare
- Tackle inequalities in outcomes, experience and access
- Enhance productivity and value for money
- Help the NHS support broader social and economic development

Place-based partnerships are collaborative arrangements formed by the organisations responsible for arranging and delivering health and care services in a locality or community.

Place-based partnerships will remain as the foundations of integrated care systems as they are put on a statutory footing building on existing local arrangements and relationships.



Integrated care systems (ICSs)

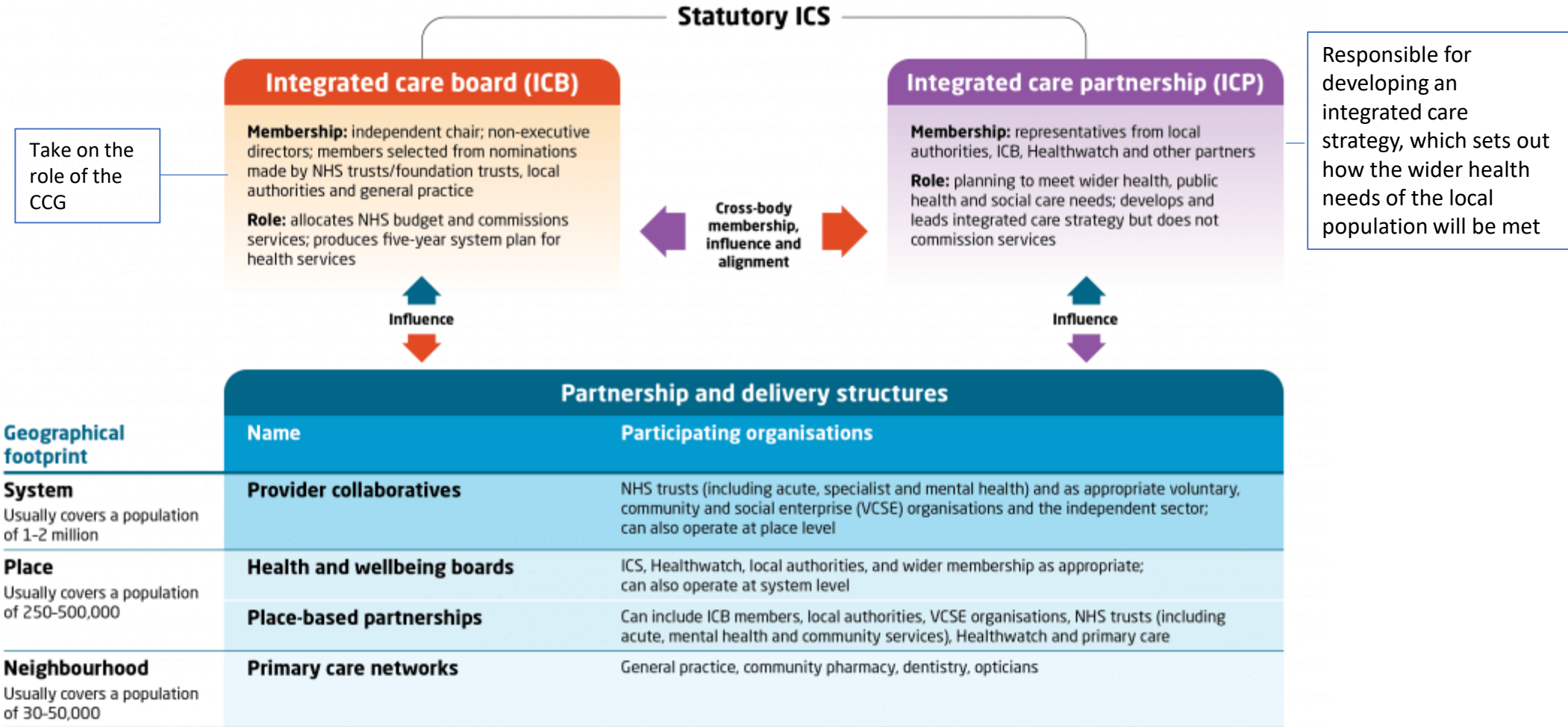
Key planning and partnership bodies from April 2022

NHS England

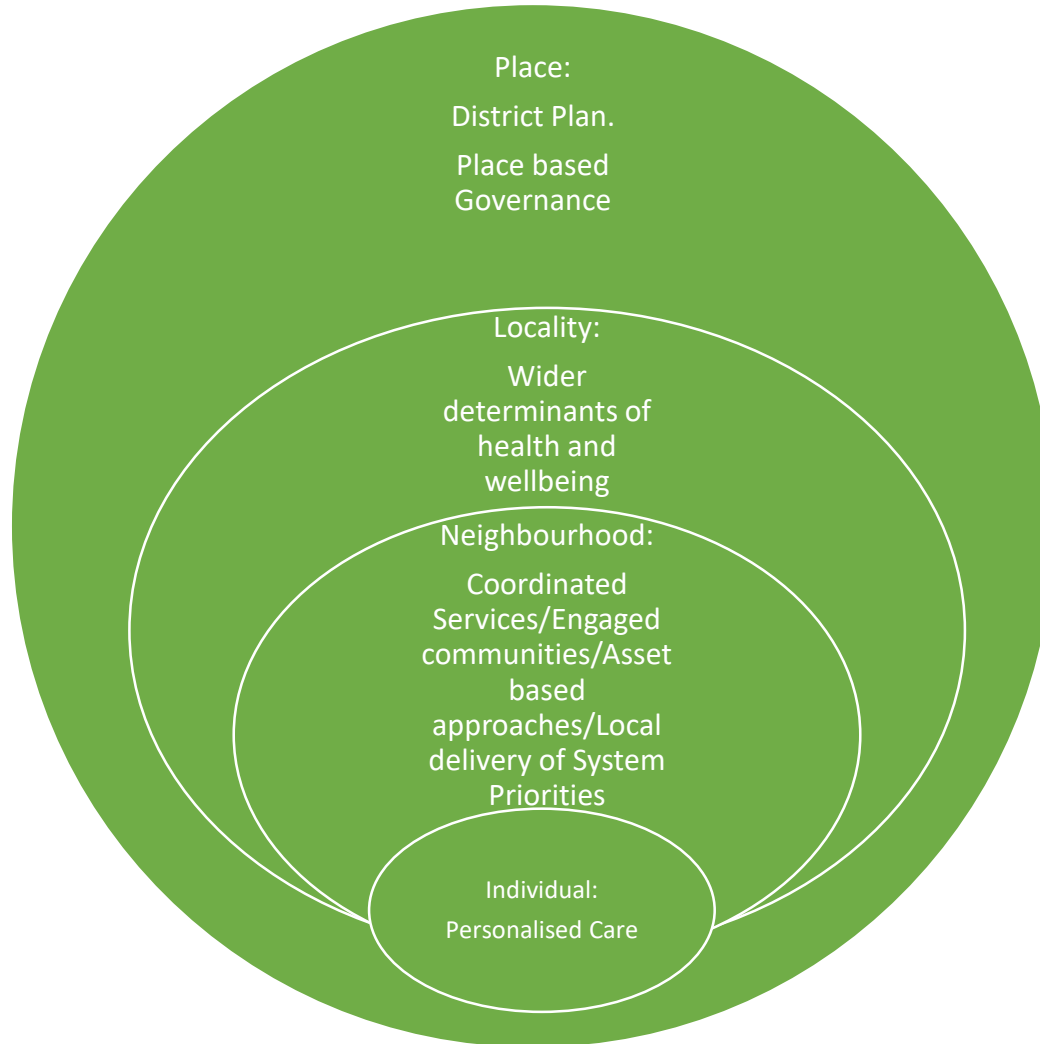
Performance manages and supports the NHS bodies working with and through the ICS

Care Quality Commission

Independently reviews and rates the ICS



WHOLE SYSTEM APPROACH



Bradford (&
Craven) Place
District Plan



System Programmes
Condition focussed
(ACT AS ONE
Diabetes/Respiratory)
(Living Well/Public
Health/ Social Care)

Locality
5 x Localities (30 Wards)
Local Authority Footprint



Locality Working
Programme

Neighbourhood
13 x Community
Partnerships (12 PCN's)
Circa 50k population
Health Footprint



Community
Partnerships
Programme

Individual



Care
Coordination
Programme